

Qzintek®



ZINTEK, VENETIAN EXCELLENCE





zintek® production plant

ZINTEK, A COMPANY OF THE CORDIFIN GROUP

Zintek Srl, located in Porto Marghera - Venice, is a single-member company belonging to Simar SpA, the only Italian manufacturer of the zintek® zinc-titanium laminate and in turn a company belonging to the Cordifin Group, a holding company which operates on an international level in the real estate, industrial and financial sectors. Thanks to its metallurgical plant – which has been active in Venice since 1936, extends over an 86,000 sq. m. surface, of which 48,000 sq. m. are indoors, and produces over 100,000 tons of semi-finished products per year - Zintek can boast a unique production chain that includes everything from the zinc smelting process to the production, commercialization and installation of zintek®.

Zintek Srl is an exclusively Italian company which offers a winning combination of tradition and innovation, allowing it to deliver highly efficient and competitive products and services.



THE COMPANY

Zintek S.r.l.: a single-member company belonging to Simar S.p.A., the only Italian manufacturer of the zintek® zinc-titanium laminate.



THE PLANT

Active in Venice since 1936, extends over an 86,000 sq. m. surface, of which 48,000 sq. m. indoors.



PRODUCTION

The plant produces over 100,000 tons of semi-finished products per year.



Today Zintek can supply any solution related to the choice and installation of the zintek® laminate. An important reference point for the construction of covering solutions, façades and tinsmithery in zinc-titanium, the company is now entering the international market with a line of innovative products. Its mission is to provide buildings with beauty, long-lasting durability and authenticity in any context, from new buildings to conservative restoration operations and renovations of disused constructions, thanks to the unique quality of its organization and its product. Choosing zintek® means choosing the tangible pleasure of a “live” material, which lasts over the course of time without losing its value.

BEAUTY, LONG DURATION AND AUTHENTICITY



CONTEMPORARY
CONSTRUCTION



CONSERVATIVE
RESTORATION



RENOVATION
OF BUILDINGS



ZINTEK, FOR ECOLOGICALLY SUSTAINABLE ARCHITECTURE

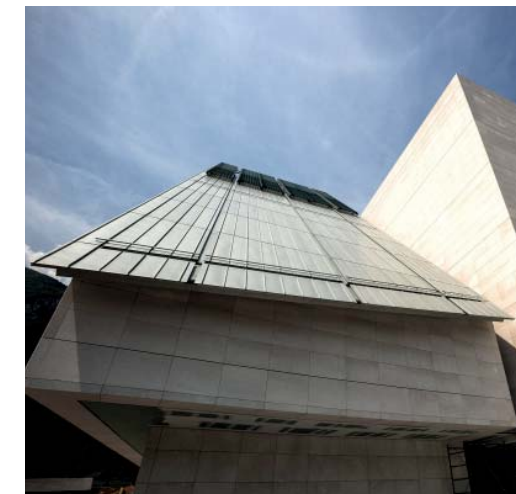
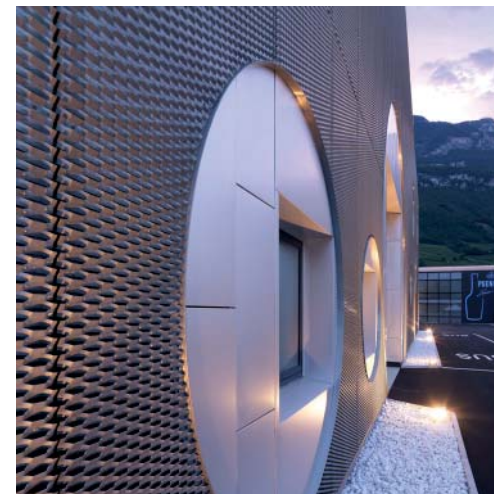
In terms of environmental sustainability, Zintek observes all requisites set by the regulatory framework for its type of product, including the Sustainable use of natural resources, and has activated its LEED® credit mapping and FSC® certification. Furthermore, Zintek is certified in compliance with the standards ISO 9001, ISO 14001 and OHSAS 18001, and affixes the EC marking on its products.





MAIN WORKS IN ZINTEK®

The following list includes some of the most relevant zintek®-covered buildings in Italy: urban redevelopment of Le Albere neighbourhood in Trento, designed by Renzo Piano; the largest Carrefour in Europe, located in Limbiate (near Milan); the new headquarters of Alitalia in Rome; the Canova airport of Venice-Treviso; restoration of the Molino Stucky Hilton Hotel in Venice. In Milan: the UniCredit Pavilion designed by Michele De Lucchi, in the Porta Nuova Garibaldi area, and the new Prysmian headquarters in the Bicocca area, designed by Maurizio Varratta.





Zinc crystals from zinc compliant with European Standard EN 1179.



Smelting of the zinc with alloying elements (copper and titanium).



Semi-finished zintek® product from the rolling mill.



The rolling mill can produce zintek® in the form of wide strip rolls.



The rolling mill can produce zintek® in the form of sheets.



The natural installation use of zintek® is for covering solutions, façades and tinsmithery.

zintek® is a zinc, copper and titanium alloy, produced starting from 99,995 % quality zinc, in compliance with European Standard EN 1179, with the addition of alloying elements. zintek® is compliant with European Standard EN 988 - Zinc and zinc alloys. Specification for rolled flat products for building.

From an aesthetic point of view, natural zintek® is a glossy grey laminate, smooth and shiny, which can be modified with pre-coating and colouring treatments.



COVERING SOLUTIONS

zintek® is suitable for all types of design, even the more elaborate ones.



FAÇADES

Different installation techniques guarantee uniform and regular surfaces.



TINSMITHERY

The catalogue offers a vast choice of eaves, discharge components, downpipes and accessories.

THE COLORED ONES

Always attentive to new trends, Zintek has launched its own line of coloured laminates for use in the world of design: six colours which enhance the nature of zintek® zinc-titanium while maintaining its characteristics intact. Mediterranean Blue, Lagoon Green, Antique Red, Natural Earth Brown, Rock Grey and Graphite Black: when colour meets material and transforms into an actual architectural element. Ideal for covering solutions and façades, as well as for interior design, the zintek® coloured laminates instil character and originality in every design, in full harmony with the external environment.



<hr/>	<hr/>	<hr/>	<hr/>	<hr/>	<hr/>
MEDITERRANEAN BLUE	LAGOON GREEN	ANTIQUE RED	NATURAL EARTH BROWN	ROCK GRAY	GRAPHITE BLACK

A PROJECT FOR THE FUTURE

Future for your projects

Concept

Zintek S.r.l.

Design and layout

creative-lab.it

Photographic references

Zintek S.r.l. Archive

Edition

December 2016

©2016 by Zintek S.r.l., Venice

Any form of reproduction of this text, even if partial or for internal and/or didactic purposes, is strictly prohibited without regular authorization.



Zintek S.r.l.

via delle Industrie, 22

30175 Porto Marghera, Venice, Italy

Tel. +39 041 2901866

Fax +39 041 2901834

zintek@zintek.it - www.zintek.it

